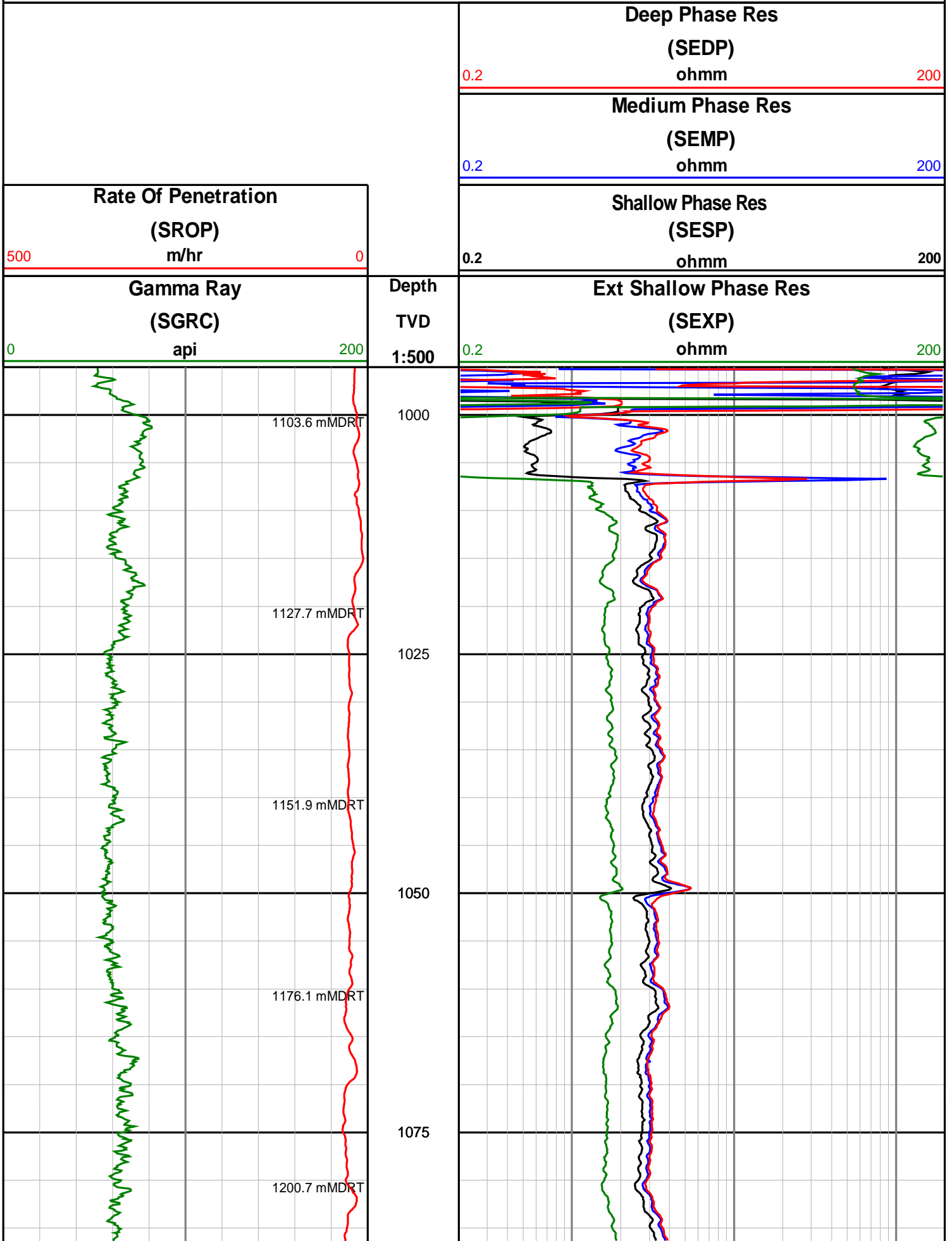
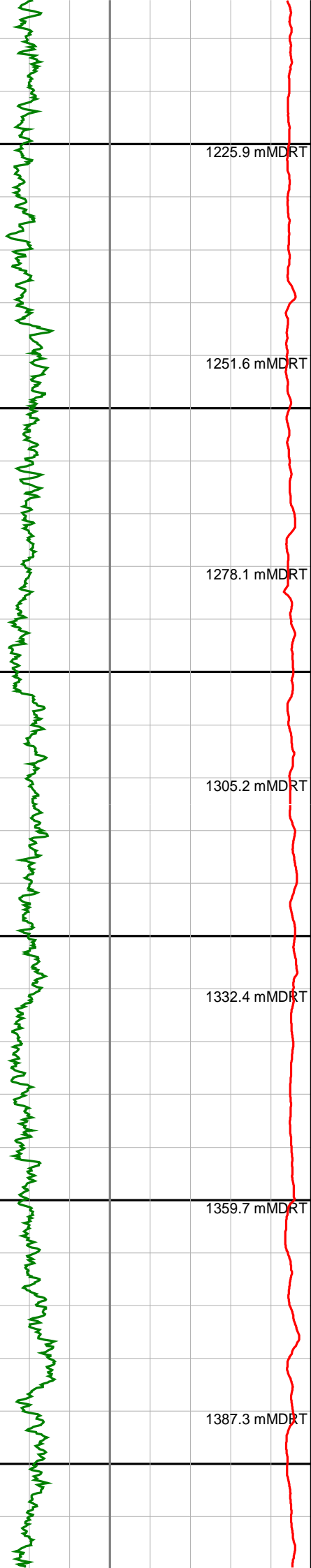


Anzon Australia Ltd

Basker-3

Recorded/Realtime LWD Log (Permanent Datum - LAT)





1100

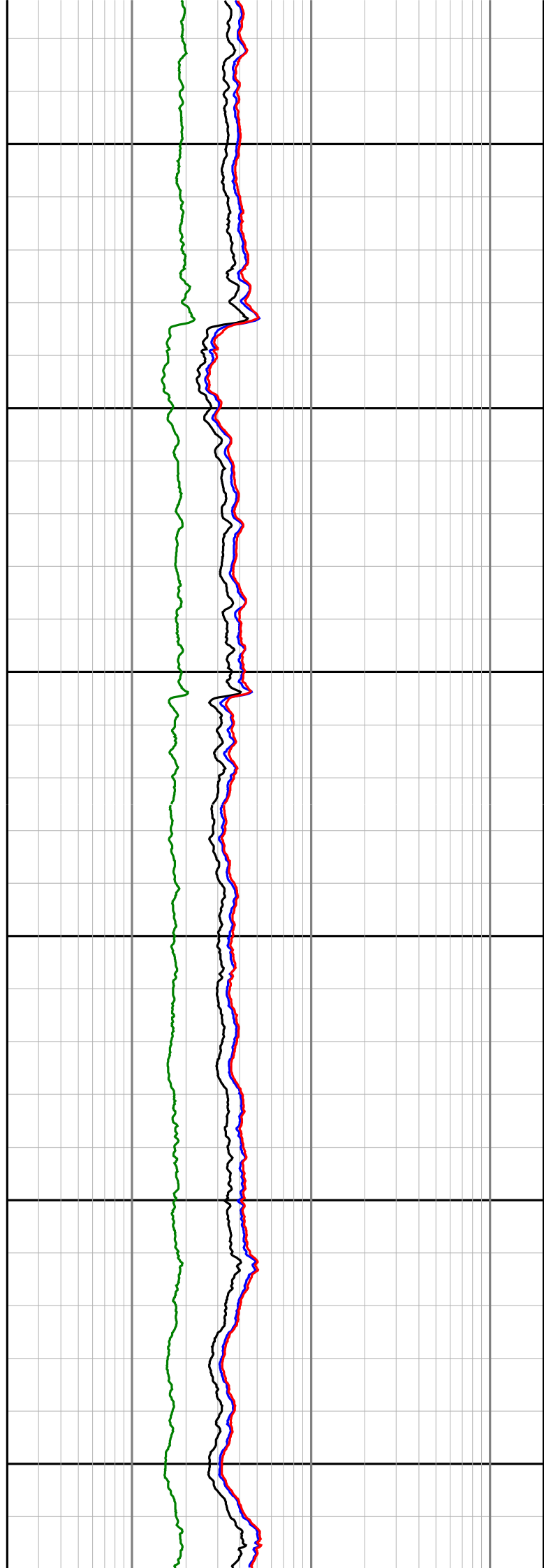
1125

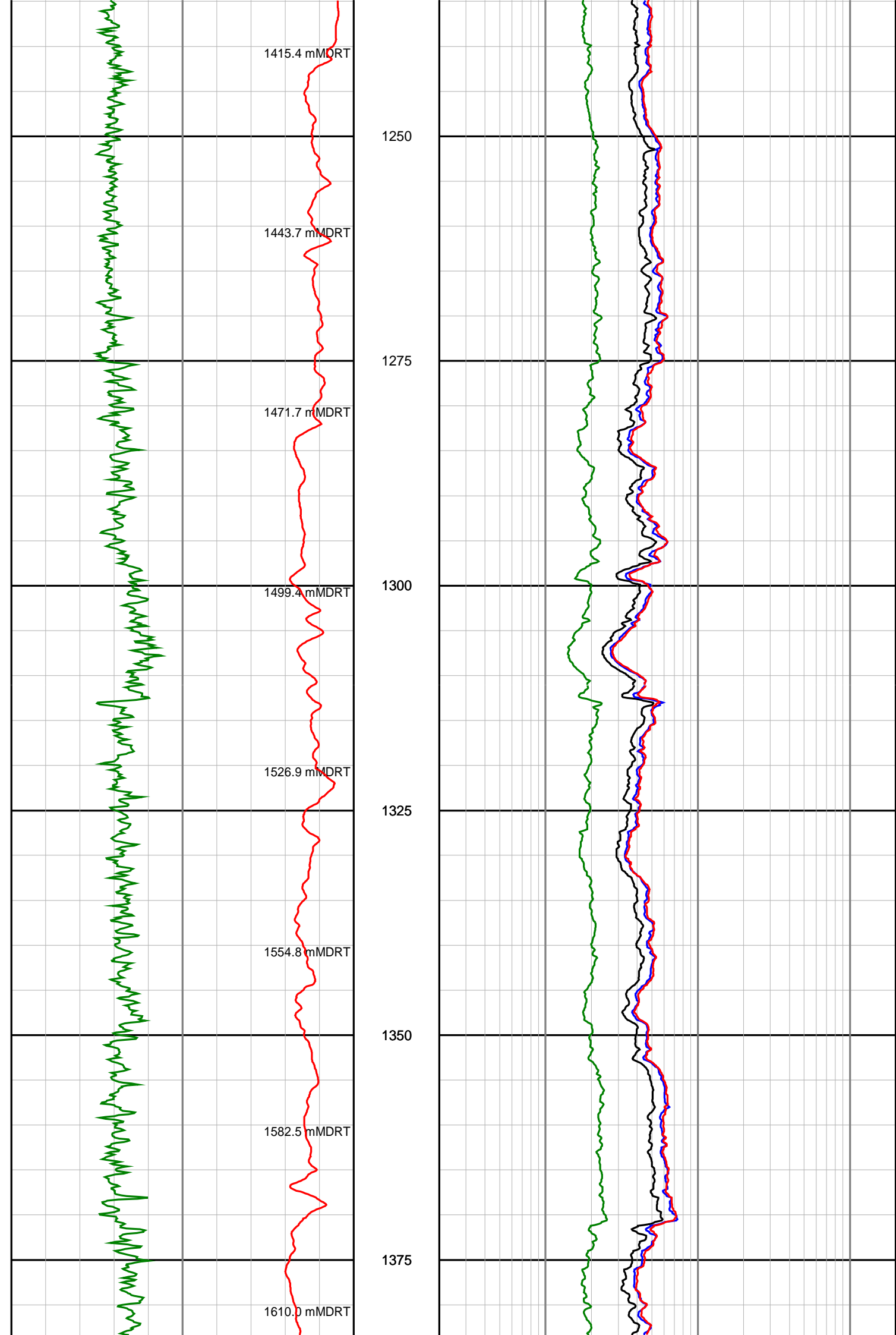
1150

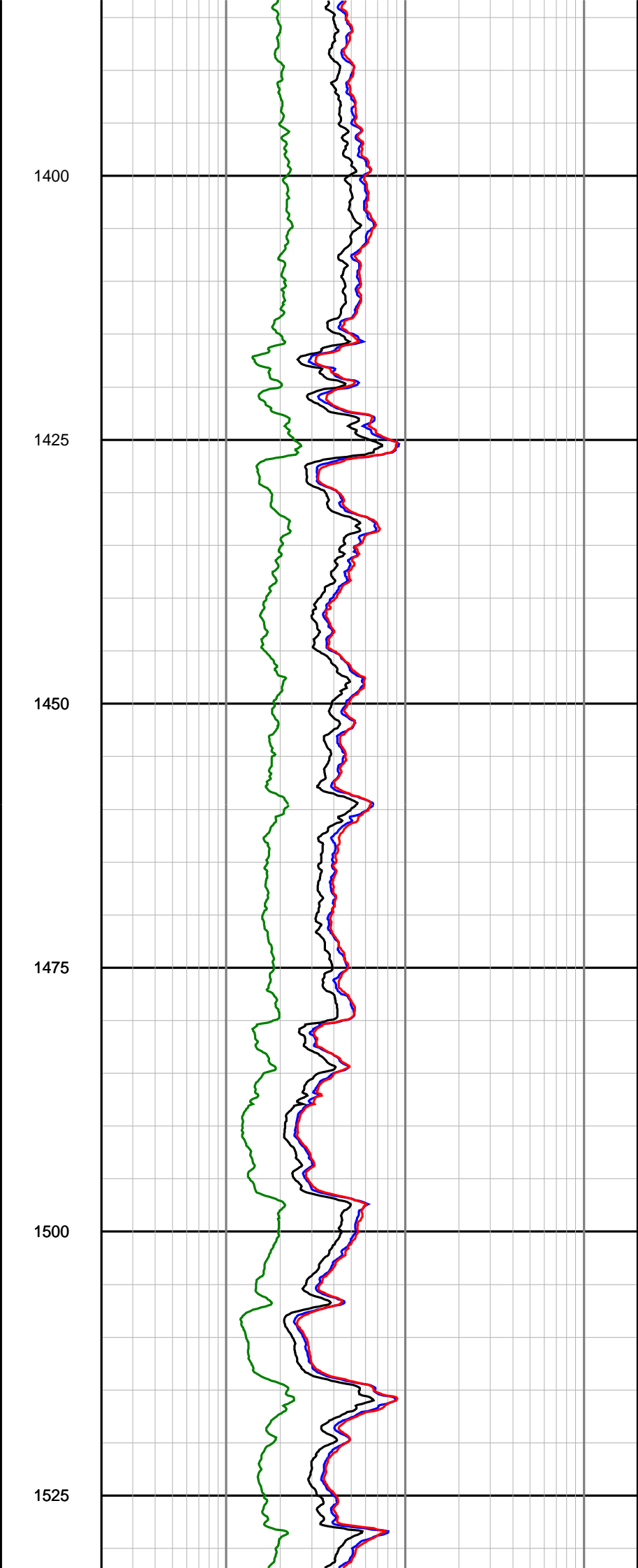
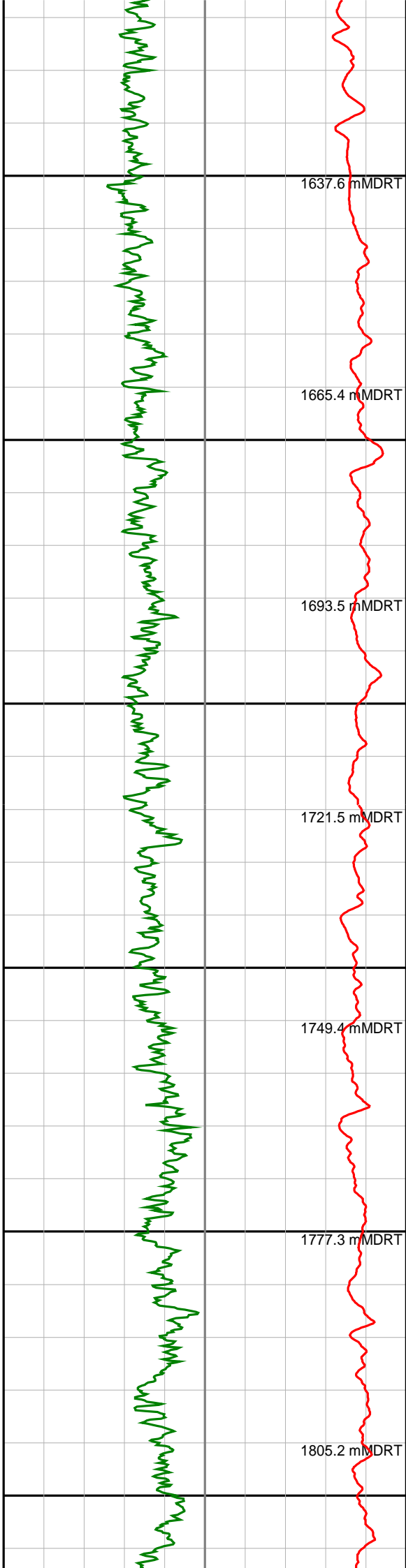
1175

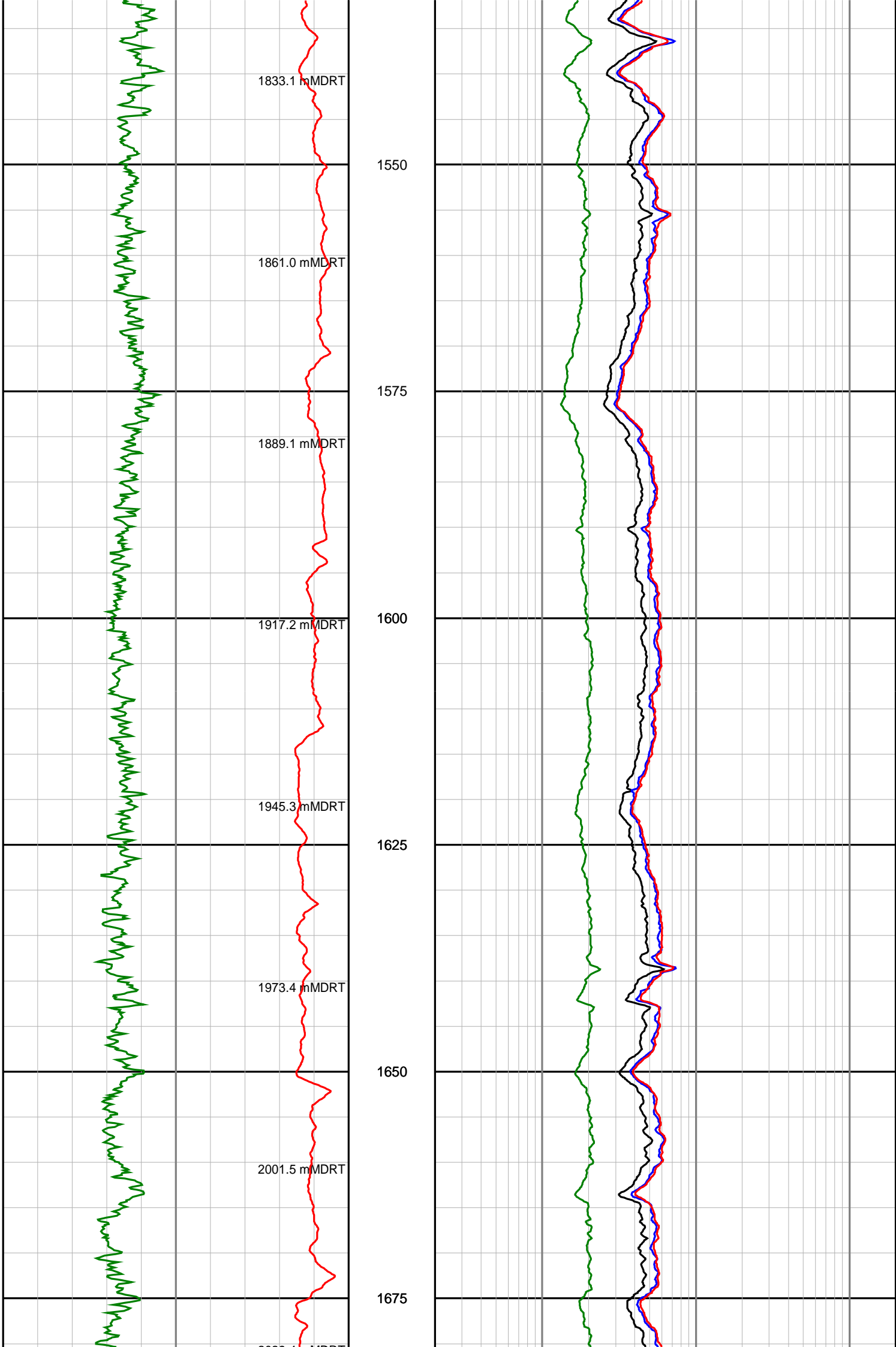
1200

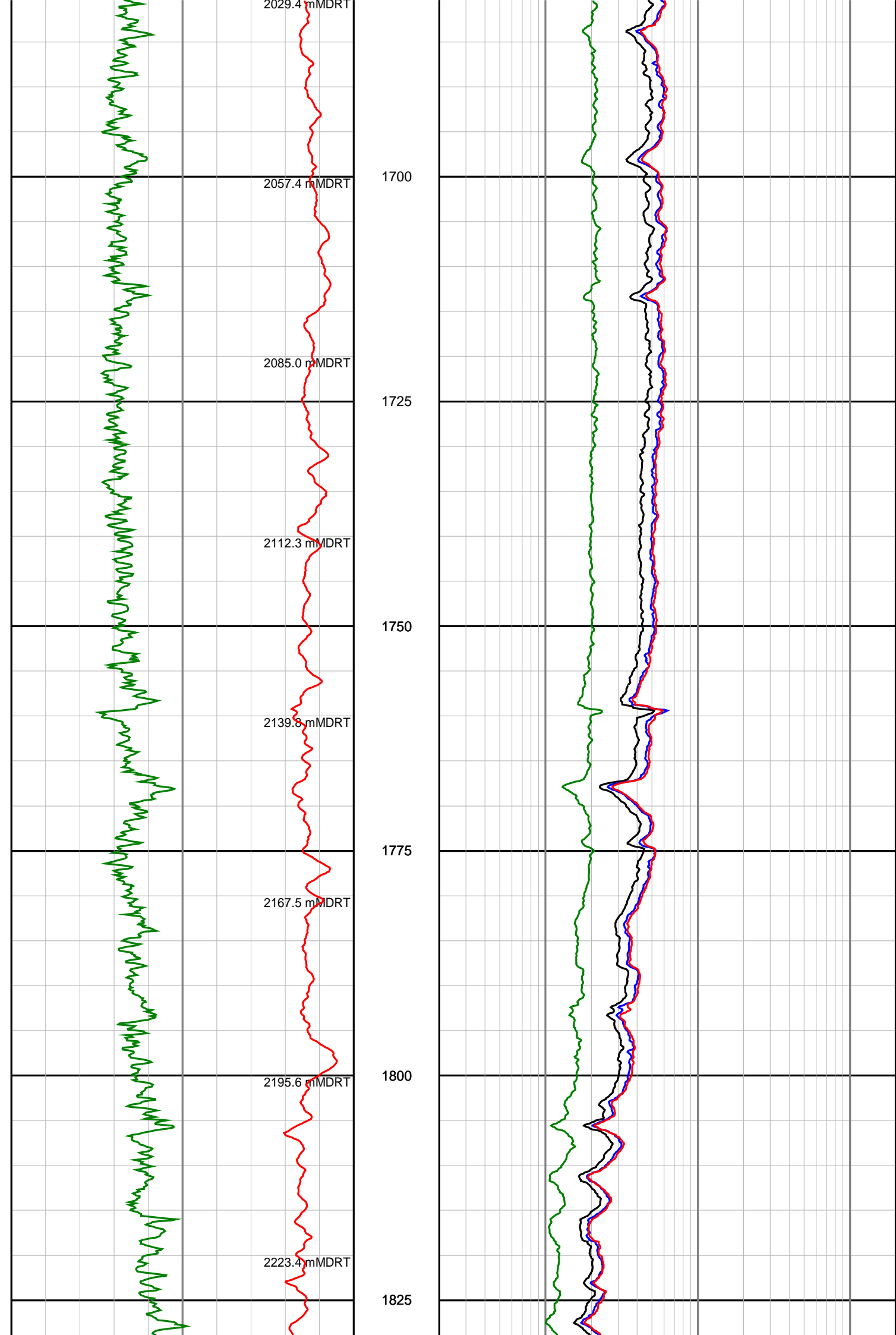
1225

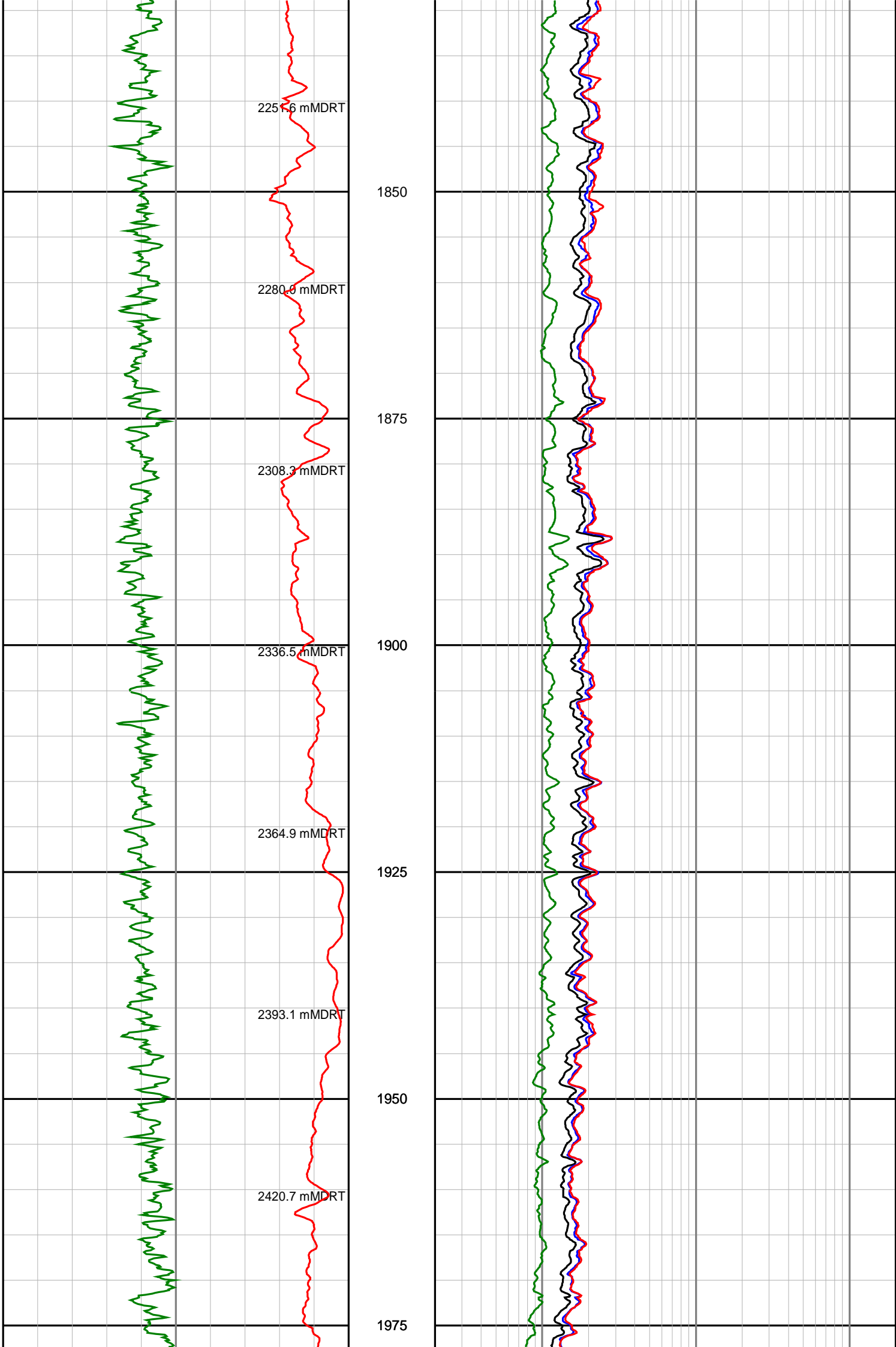


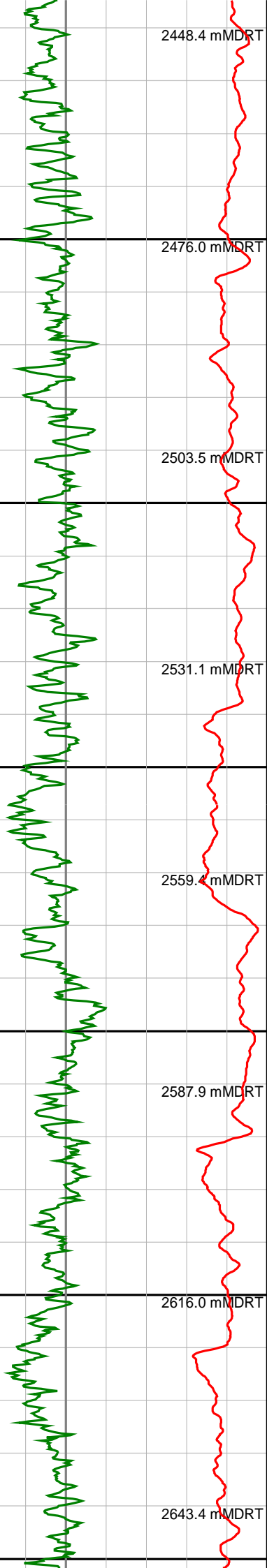




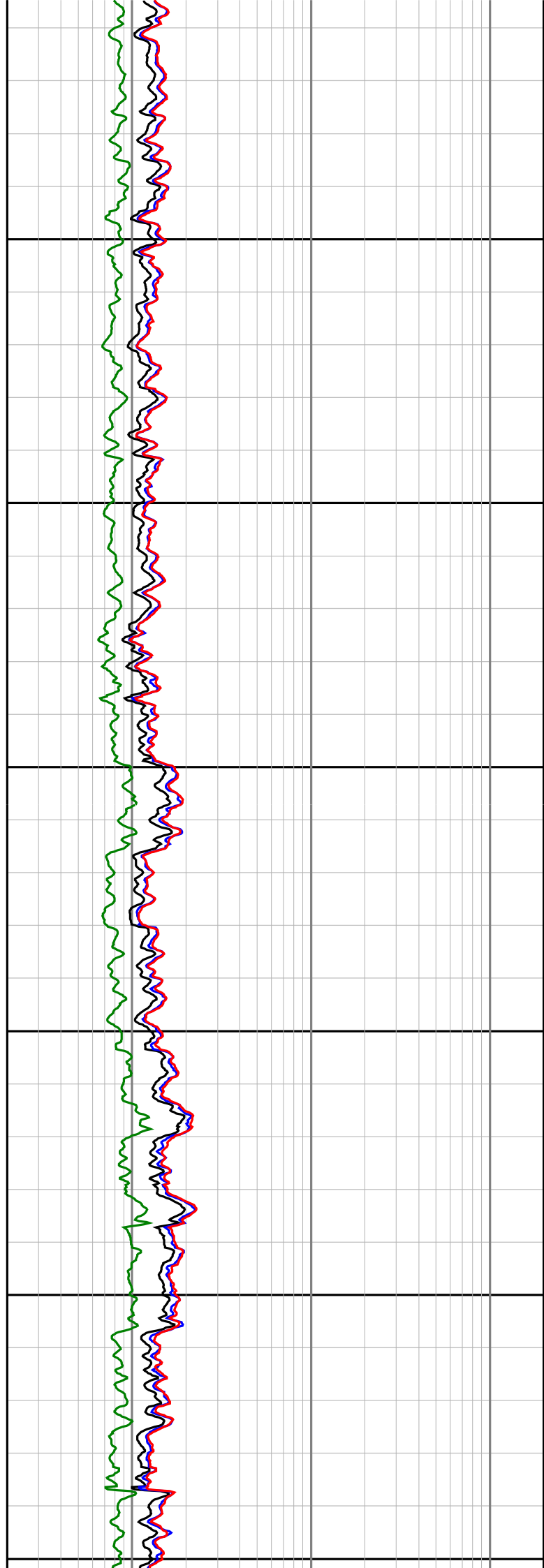


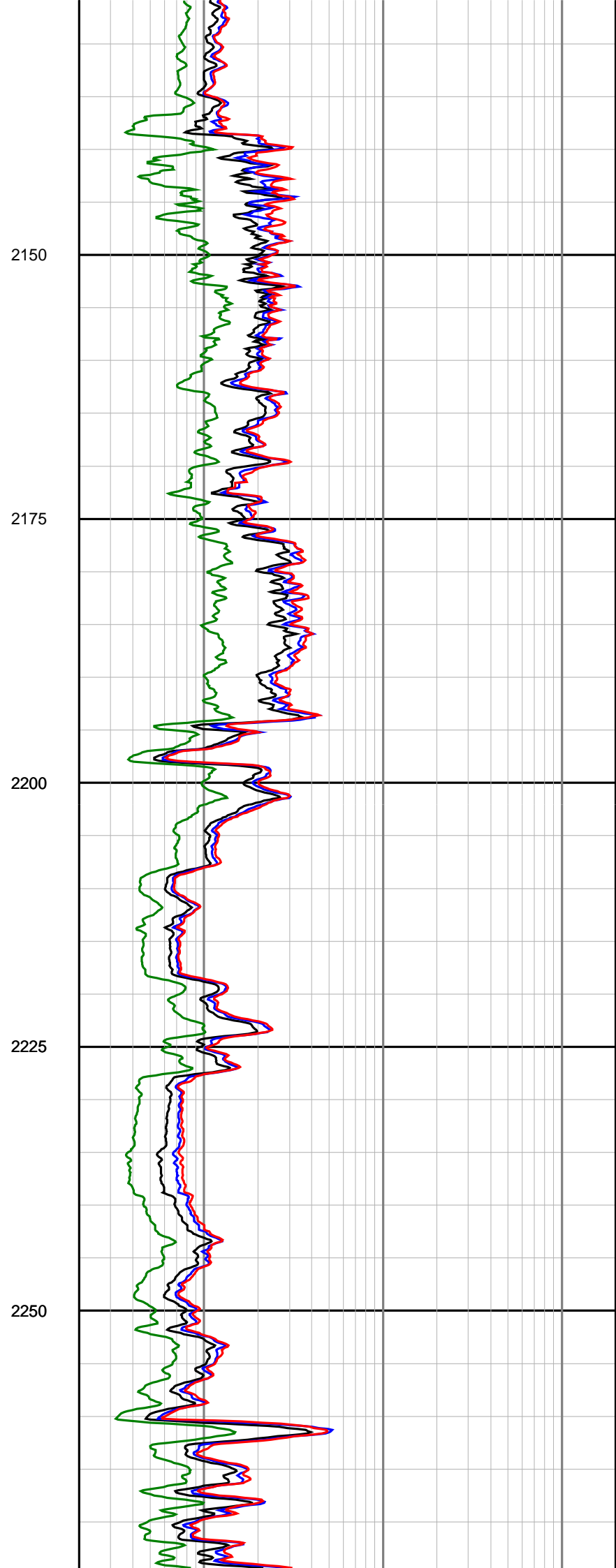
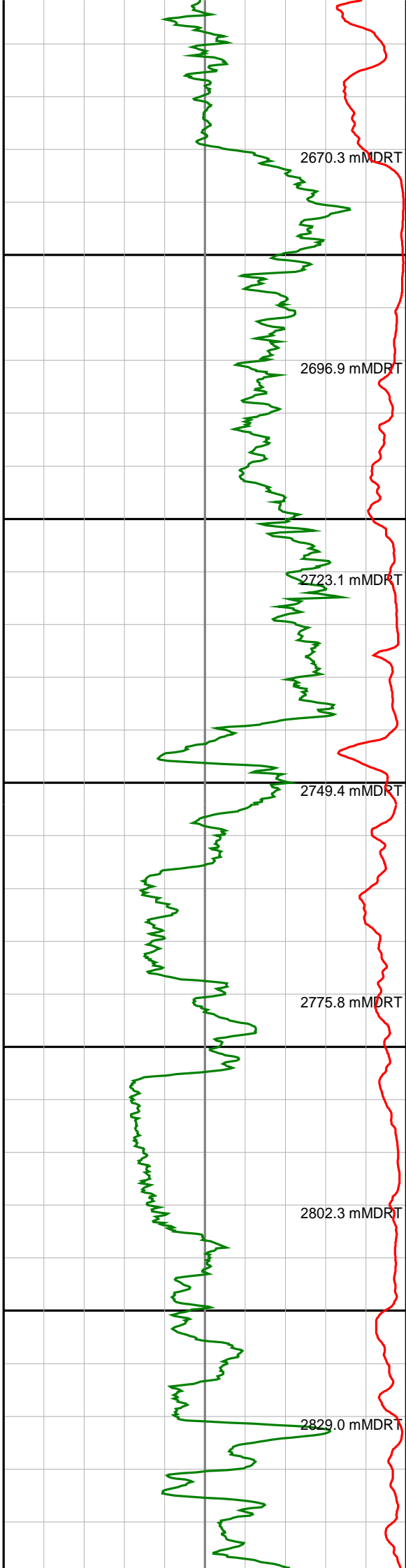


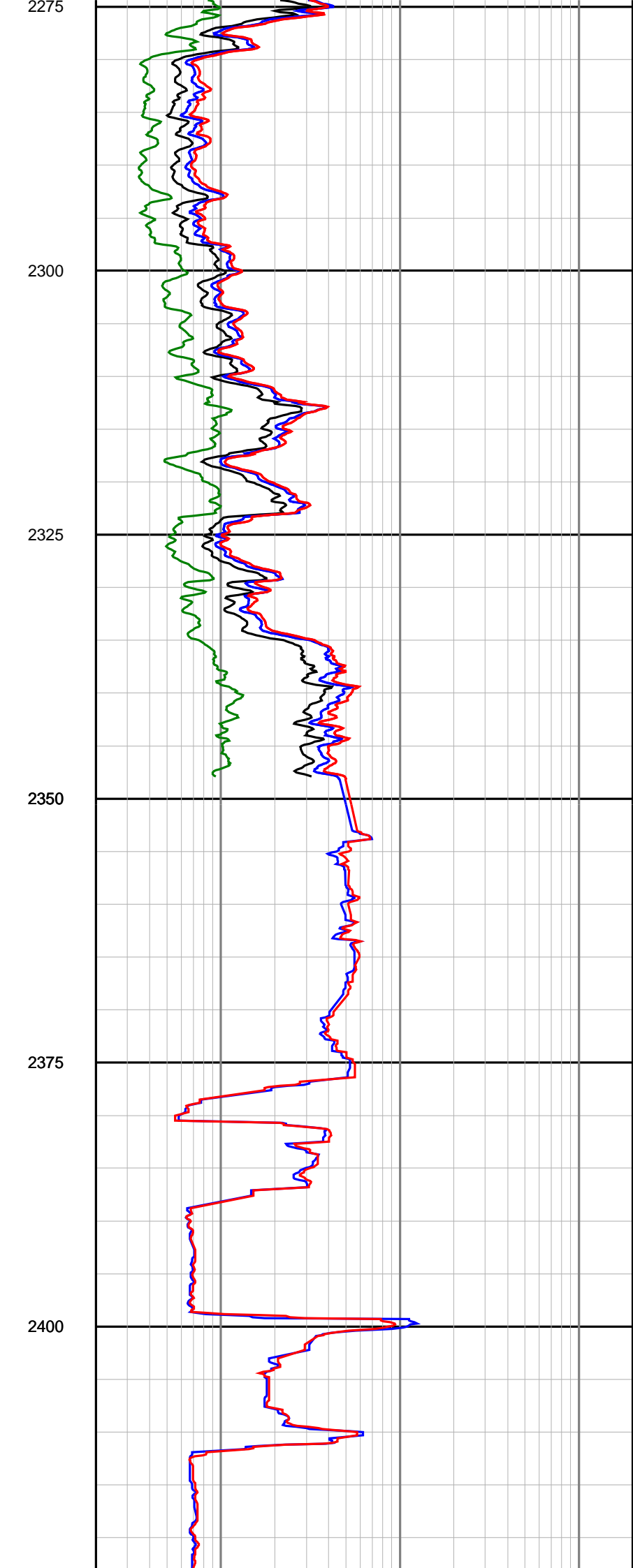
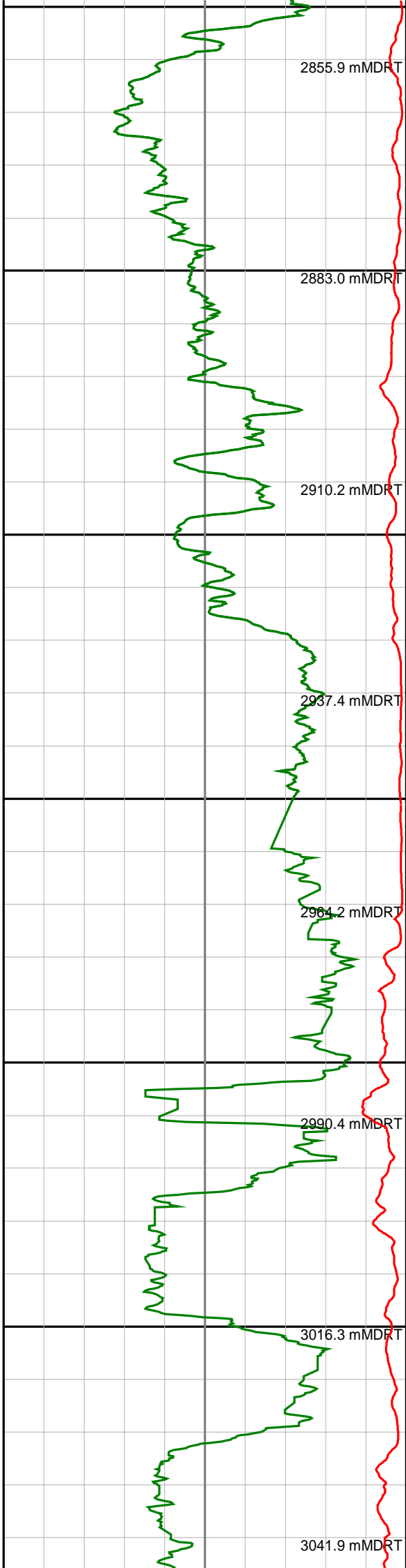


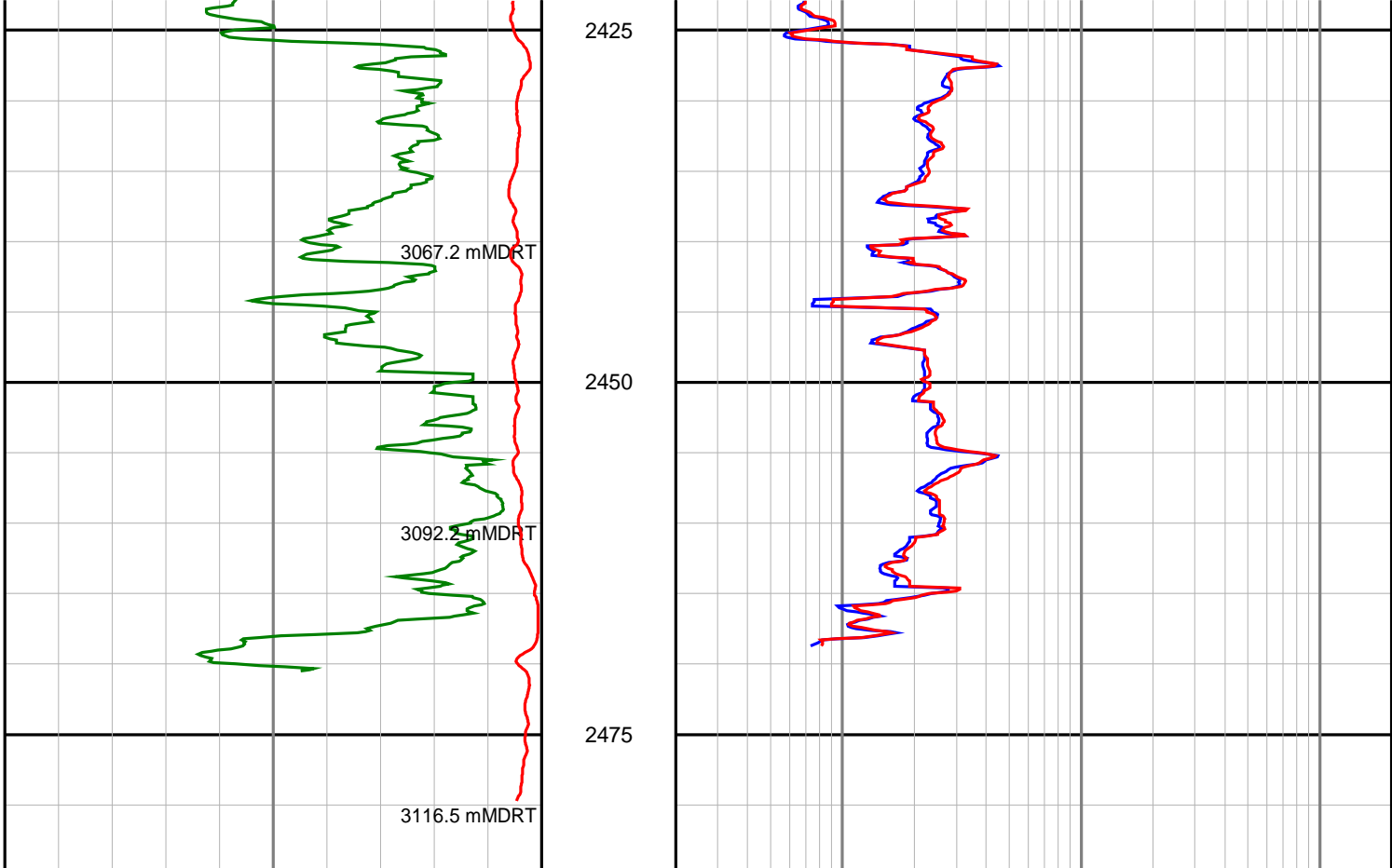


2000
2025
2050
2075
2100
2125









<p>Gamma Ray (SGRC) api</p> <p>0 200</p>	<p>Depth TVD 1:500</p>	<p>Ext Shallow Phase Res (SEXP) ohmm</p> <p>0.2 200</p>
<p>Rate Of Penetration (SROP) m/hr</p> <p>500 0</p>		<p>Shallow Phase Res (SESP) ohmm</p> <p>0.2 200</p>
		<p>Medium Phase Res (SEMP) ohmm</p> <p>0.2 200</p>
		<p>Deep Phase Res (SEDP) ohmm</p> <p>0.2 200</p>